

TECHNICAL DATASHEET

Stainless Steel - ABS Dispenser

MAJA
International

HAND CLEANING AND HYGIENE SOLUTIONS





DT800 Series Touch Free Dispensing System MAJA Luxury

- Overview**

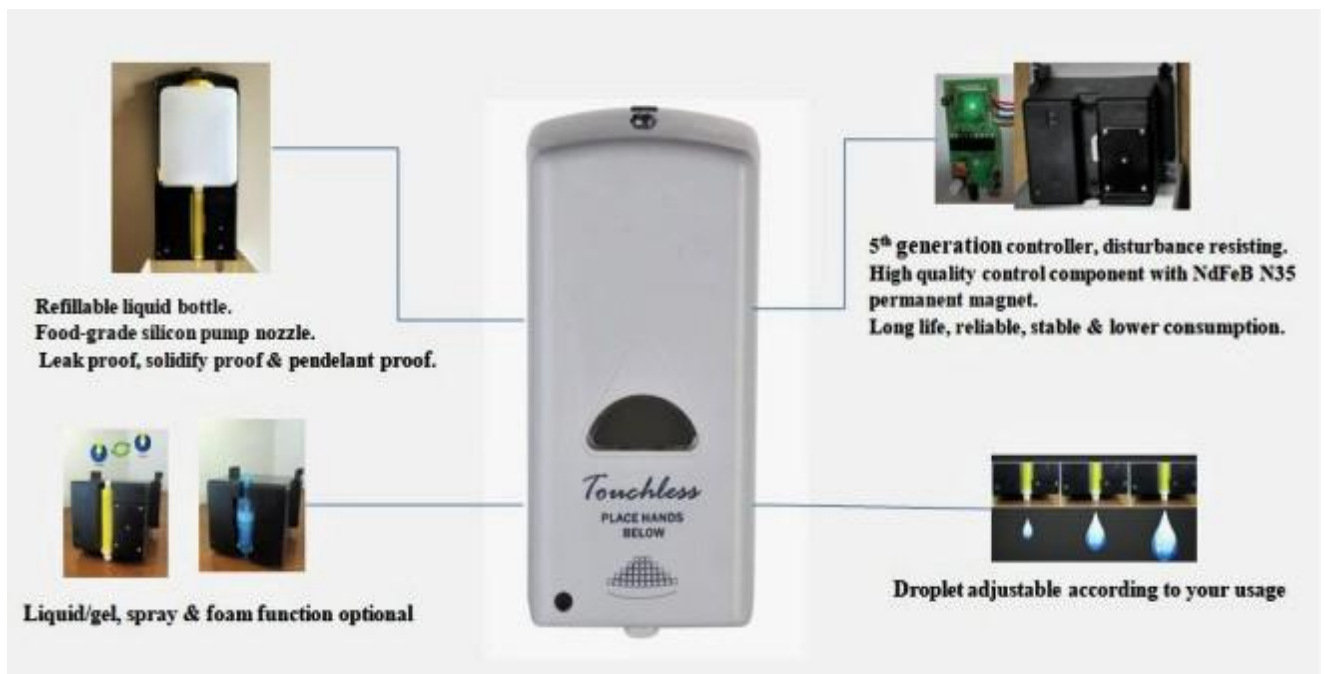
It is known to all that many viruses and germs are spread by hand contact, thus proper hand cleaning is one of the best ways for people to avoid viruses and germs and stay healthy.

With advanced technology and humanized design, the Doctor-clean® DT800 series touch free dispensing system makes it easier and more hygienic for you to get your hands clean and stay healthy.

Model	DT800
Material	ABS Plastic
Capacity	800 ml (max. 1000 ml)
Function (optional)	Drop, Spray, Foam
Sensor Distance	6-12 cm
Droplet (adjustable)	0.9~1.2ml (DT800)
Dimension	13.5×12.0×26.5 cm
Weight	0.85 kg(DT800)
Power Supply	4 pcs. "C" batteries
Battery Life	At least 100,000 Dispensing Cycles (DC)

- **Features**

- Touch free dispensing system, easier and safer.
- Patented modularization design, easy for operation & maintenance.
- Flexible nozzle design, drop, spray & foam optional suits for a variety of liquid, gel soap and disinfectant.
- Bottle/disposable bag optional.
- Low power consumption, battery life $\geq 100,000$ cycles.
- Anti theft design.
- CE certified.
- Primary application sites: Health care, schools, hospitals, office buildings, hotels & restaurants, shopping malls, food factories, public facilities, etc.



- **Installation**

- Install the product on a flat and clean wall surface by using the enclosed screws and wall plugs.
- Note: 1. Do not install the product under direct sunlight.
2. Make sure there is no white surface or any other strong reflectors within 30cm below.
- Install six (6) Alkaline “C” Cell batteries, 1.5V into the battery chamber which is located on the back of control box, put back and fix the control box by sliding down. Must be slide to bottom.

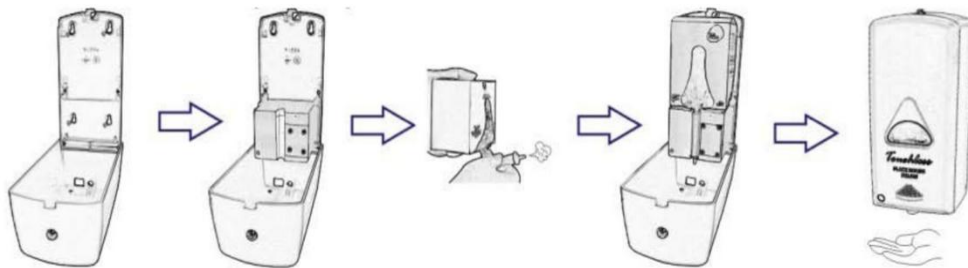
- **Operation**

- Refillable bottle:

1. Open the dispenser cover, take out the bottle and fill the bottle with liquid or gel.
2. Put the bottle back into the dispenser.
3. Close the cover.

- Disposable bag:

1. Fill the bag with liquid or gel through the hole on the bag.
 2. Fill the nozzle fully with liquid or gel (Press the nozzle & make air discharged).
 3. Insert the nozzle into the bag.
 4. Open the dispenser cover to install the bag. Pull the valve hose out and down, place the bag on top of the control box, place the hose in the channel, make sure the upper collar is beneath the upper notch and the lower collar fits into the lower notch.
 5. Close the cover.
- To activate the dispenser, place hand under spout for approximately one second. Sensing range factory setting is 4-8cm, which is recommended for optimal performance.



Stand Material	Stainless Steel
Dimension	1330X500x400
Height	1330mm
Width	400mm
Weight	10.2kg

